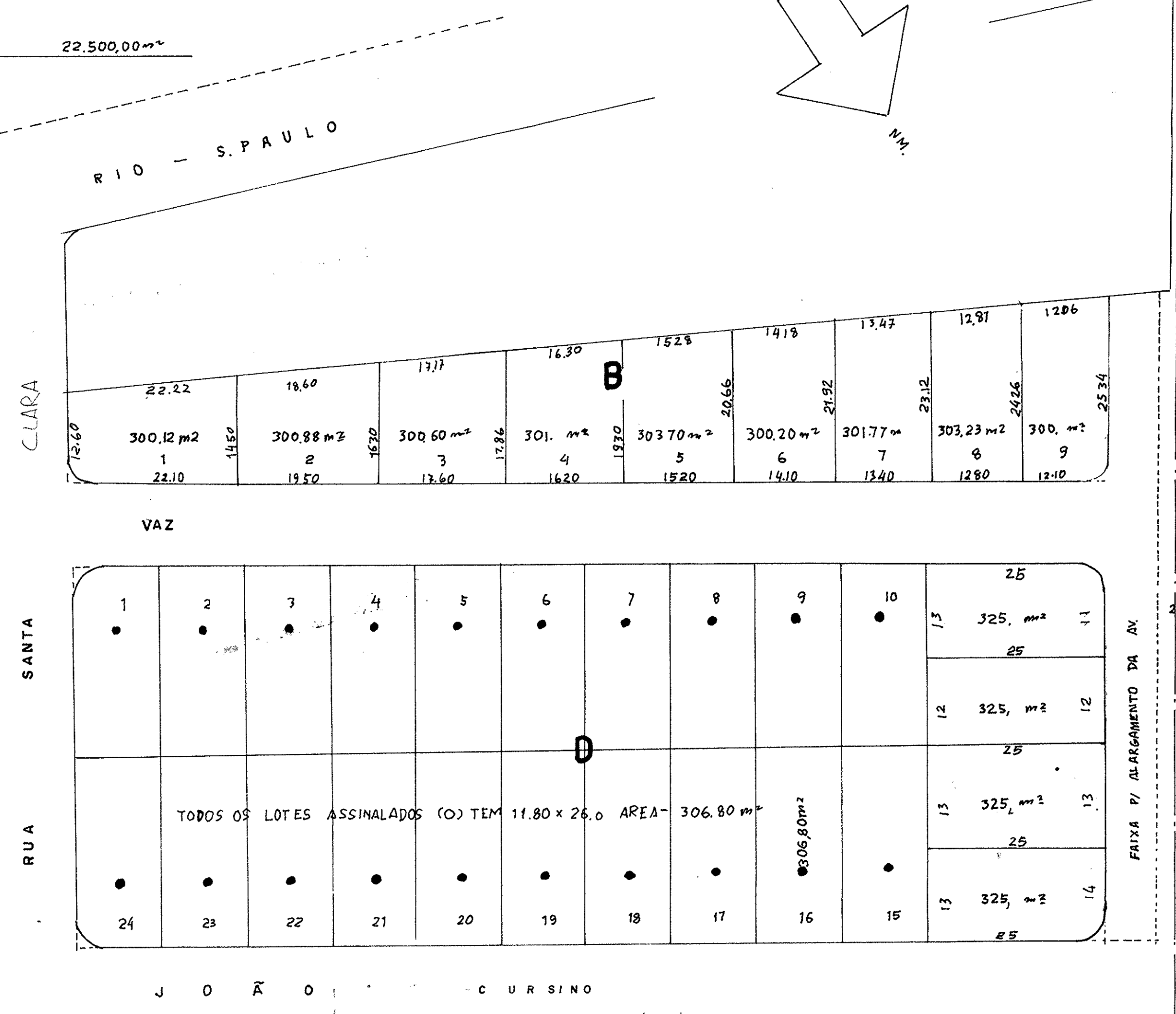
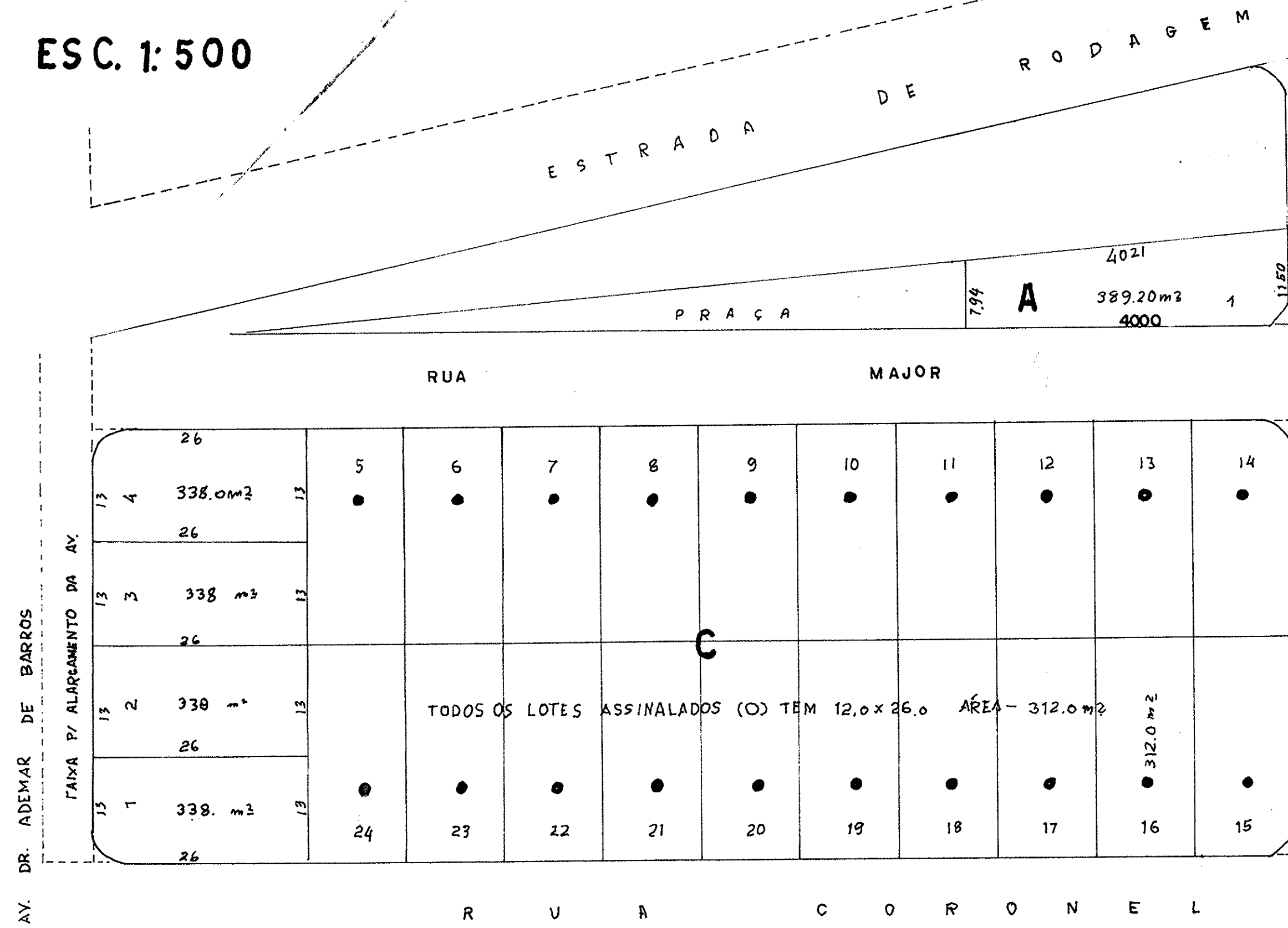
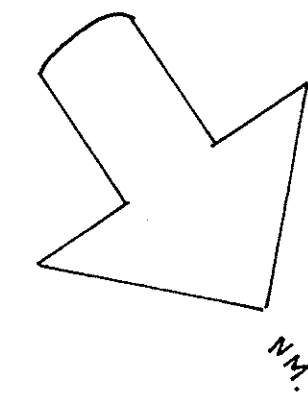


VILA ICARAÍ

PROPRIEDADE DE ADELINO A MENDONÇA
 ROBERTO ROSSI
 JOSÉ ORESTES CORRADI
 CONSTANTINO CORRADI

ÁREA DOS LOTES 18.128,70 m² 70 %
 RUAS E PRAÇA 4.371,30 m² + 3.416,70 m² = 30 %
 TOTAL 22.500,00 m²

S. JOSÉ DOS CAMPOS
 ESC. 1:500



AV. ADEMAR DE BARROS

FAIXA P/ ALARGAMENTO DA AV.

FAIXA P/ ALARGAMENTO DA AV.

AV. 9 DE JULHO