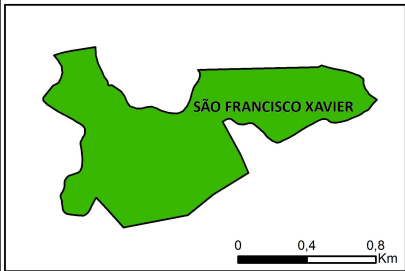
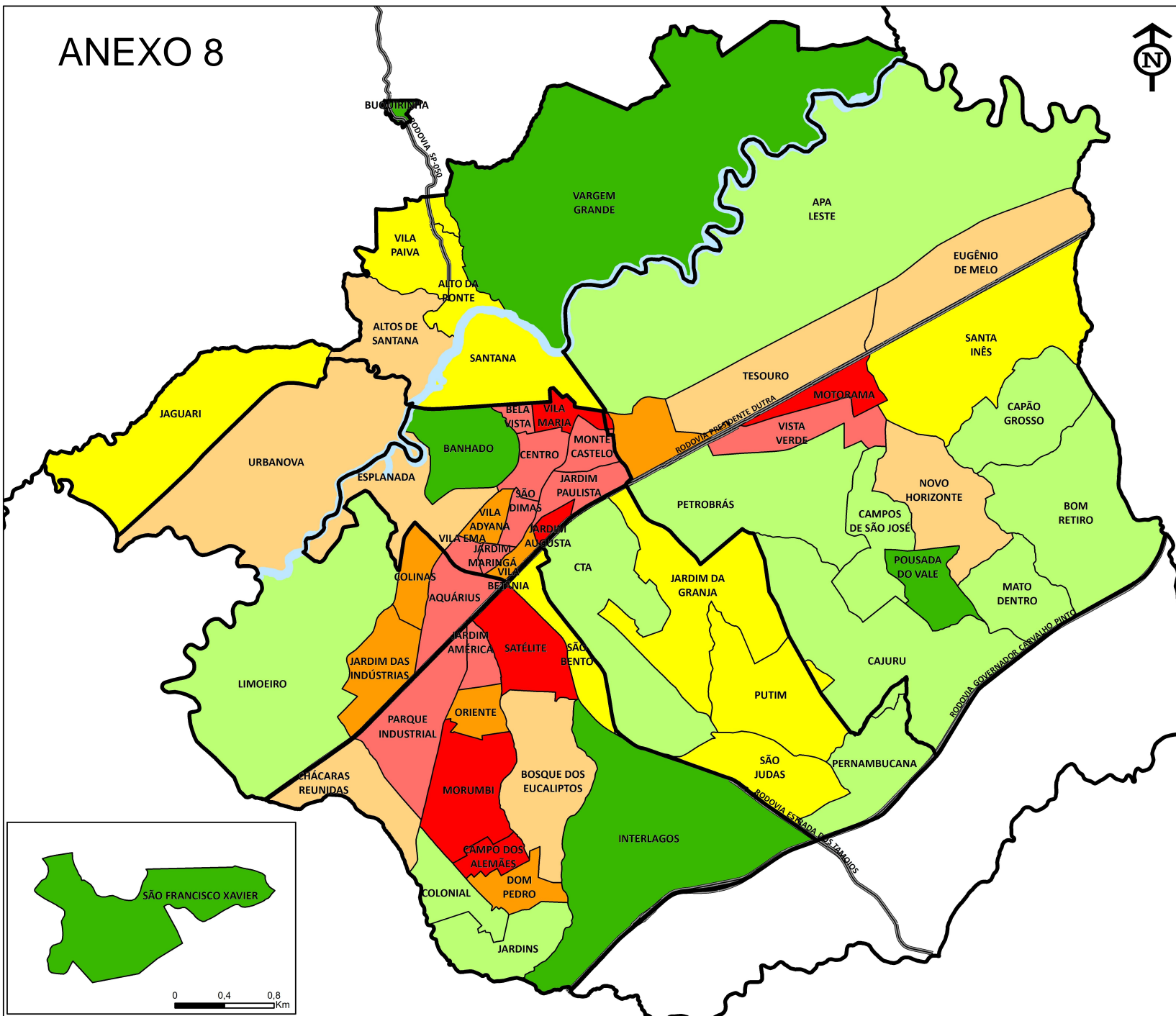
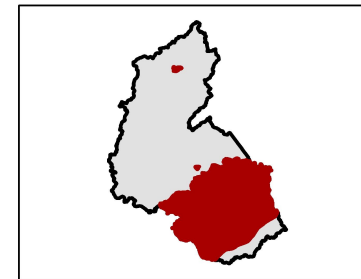


ANEXO 8



Cobertura arbórea por bairros

Plano de Arborização 2016



Legenda

- Regiões Geográficas
- % de cobertura arbórea**
- 8 - 15
- 16 - 20
- 22 - 25
- 26 - 35
- 36 - 42
- 44 - 55
- 57 - 70

Escala Gráfica

