

J. ROSÁRIO

JARDIM ORIENTE

ESC: 1.1000

JARDIM DO CÉU

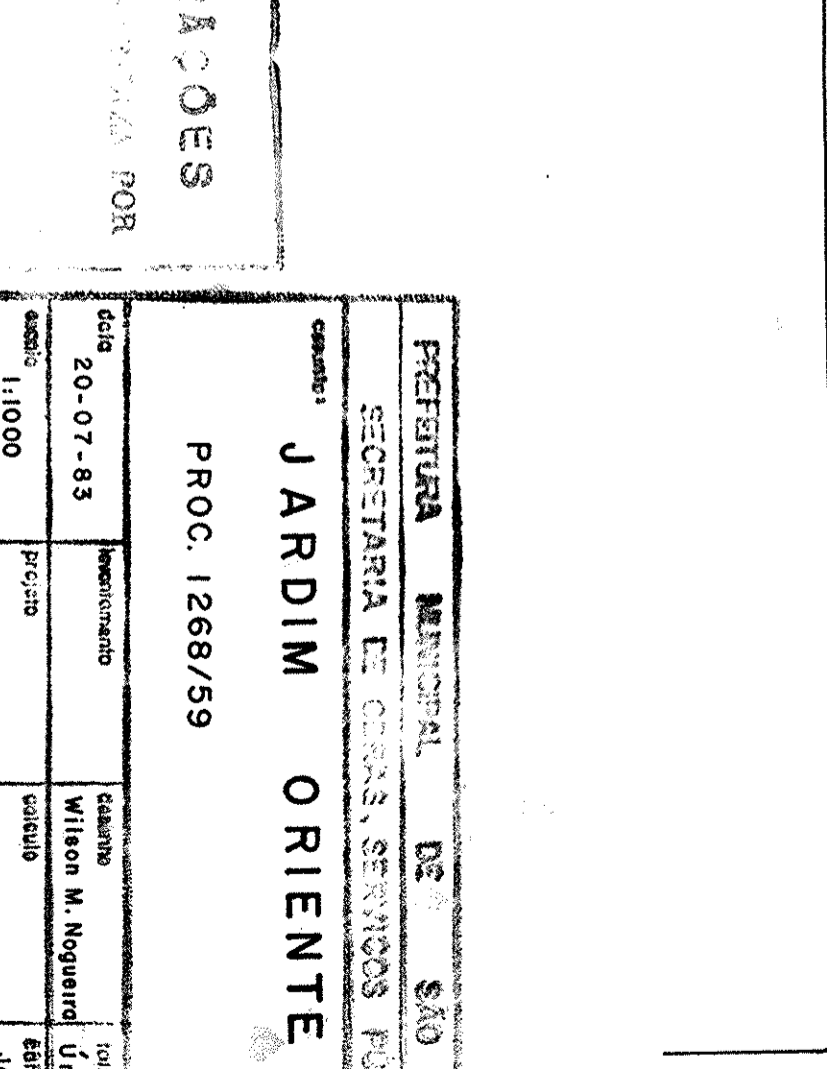
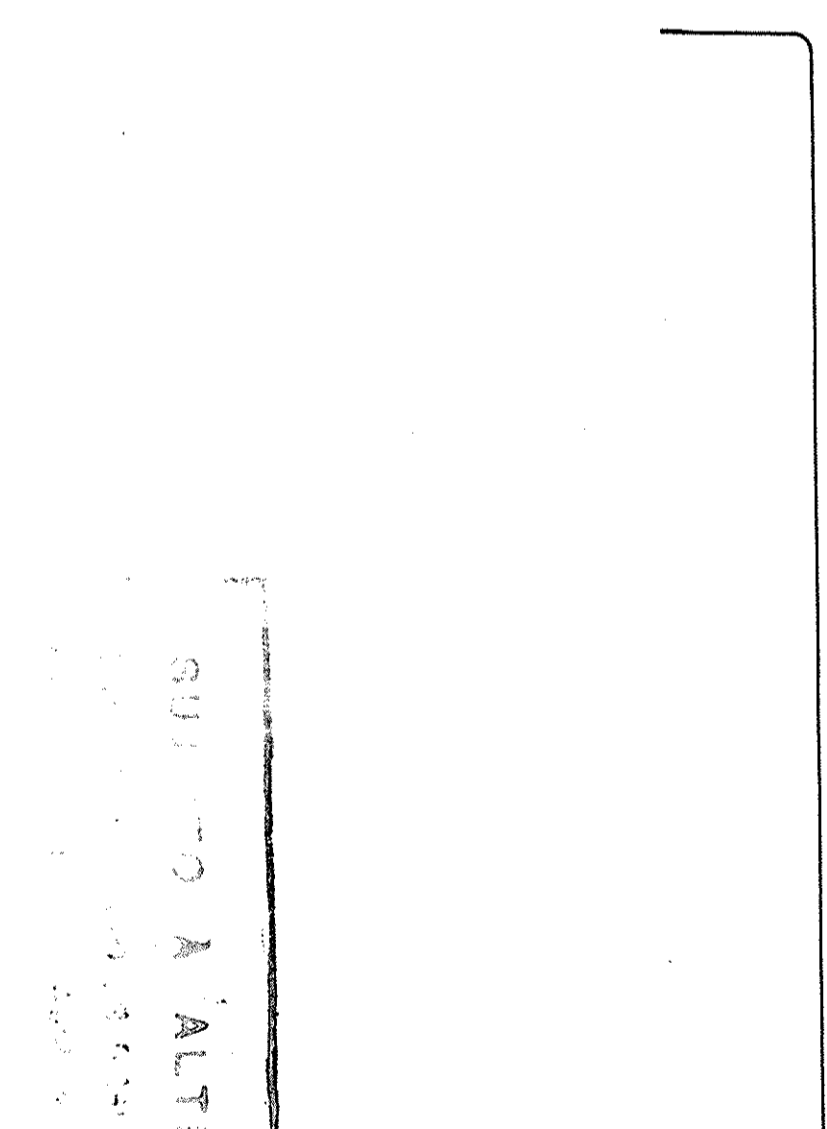
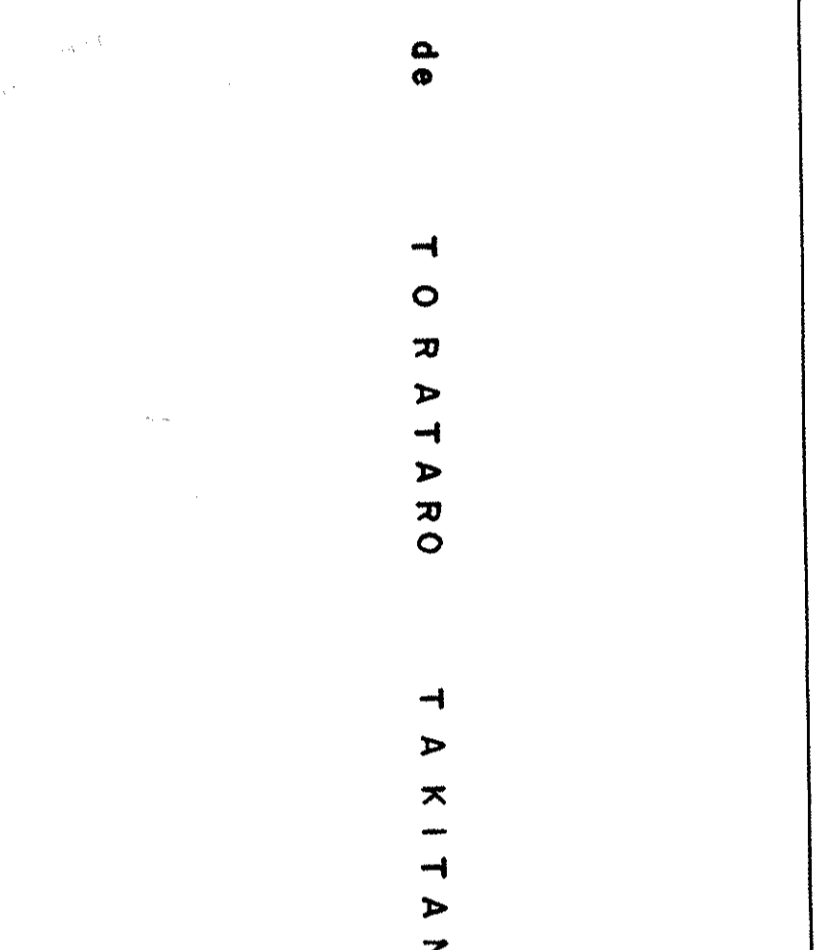
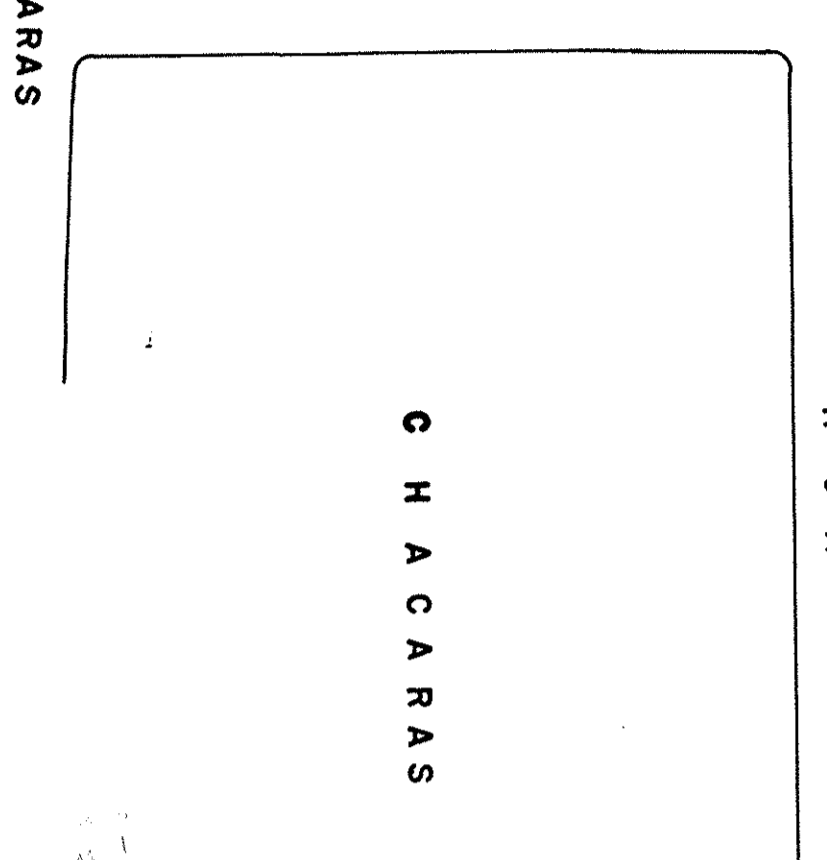
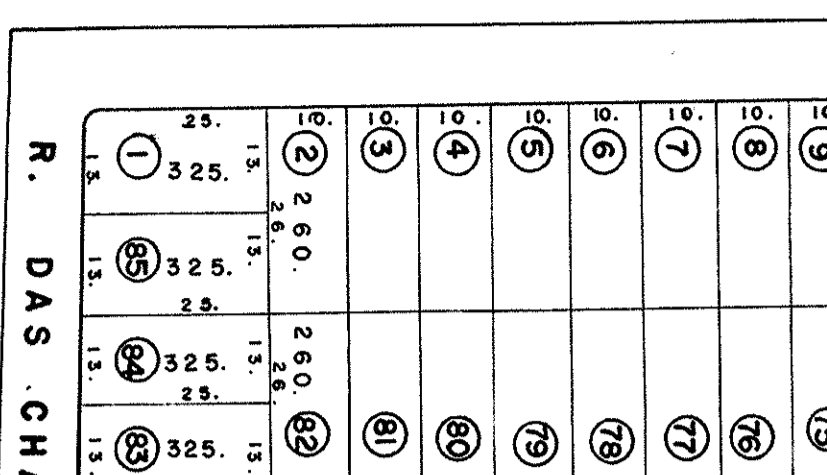
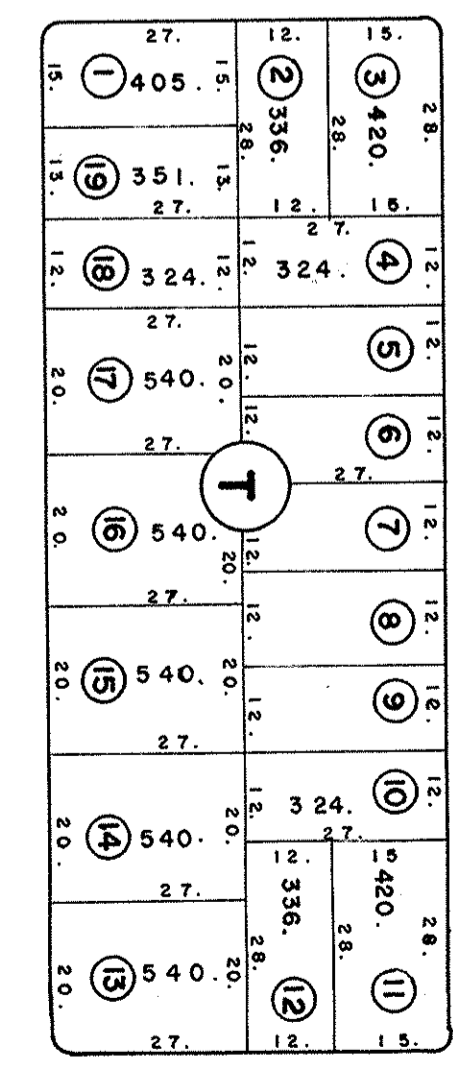
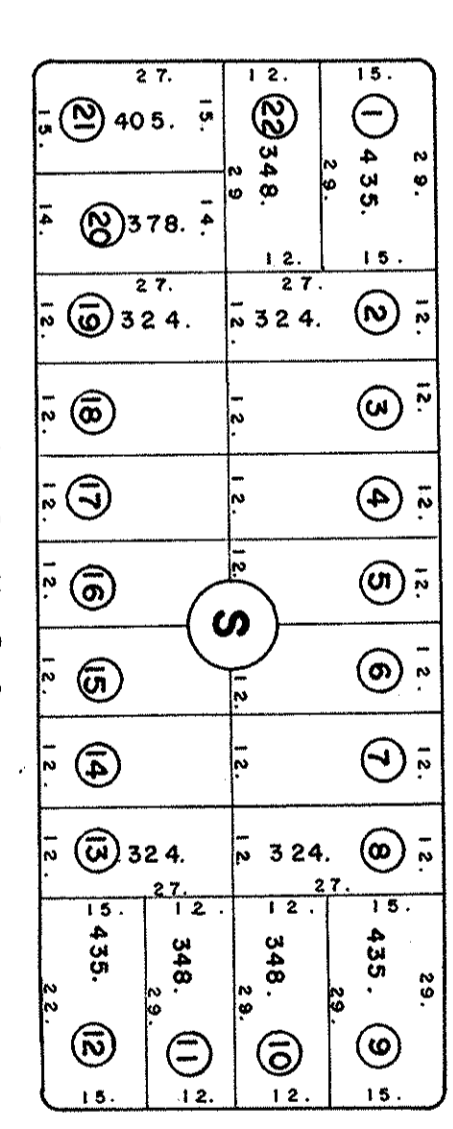
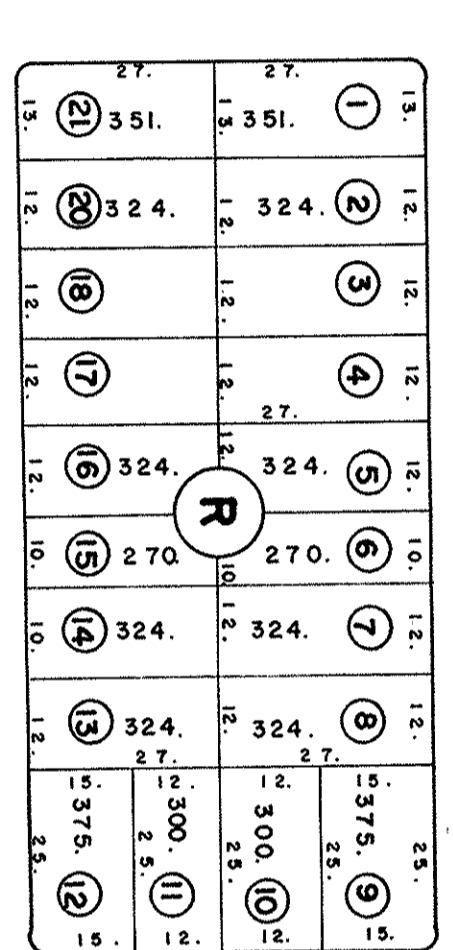
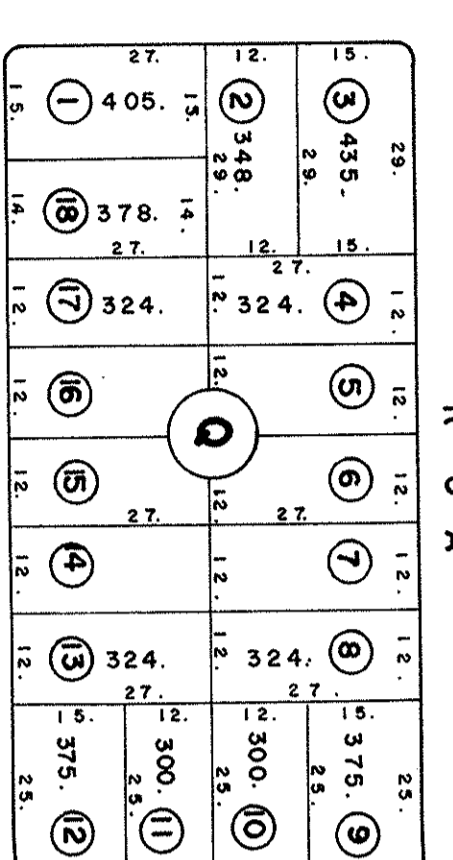
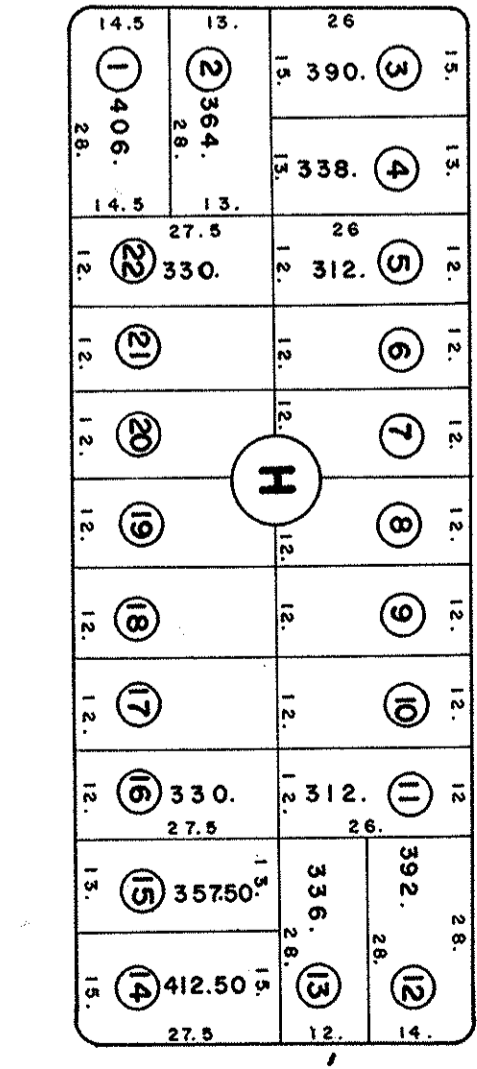
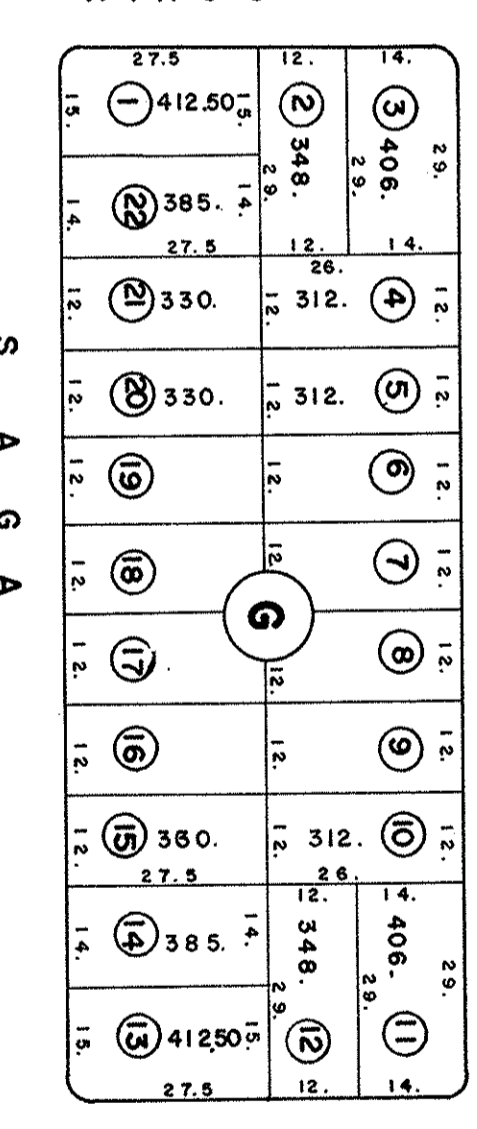
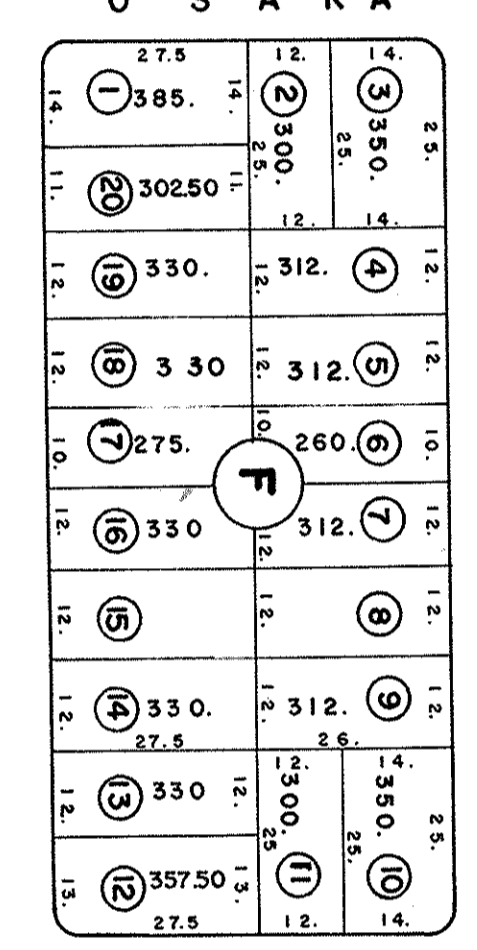
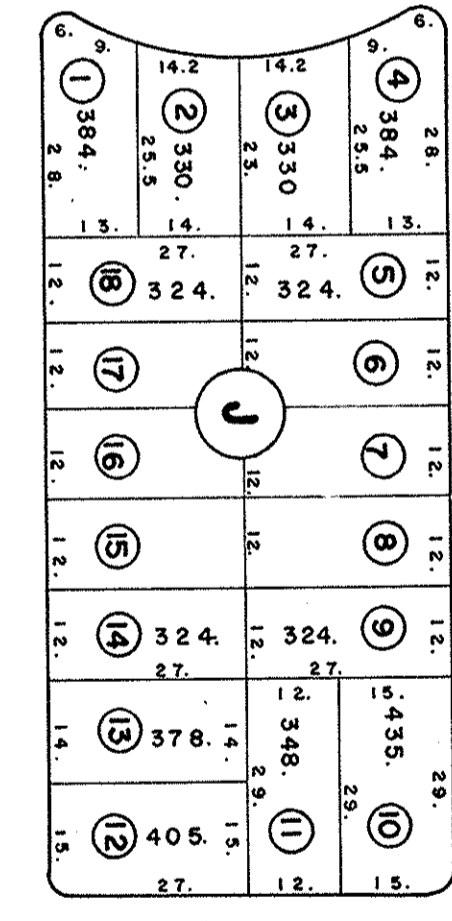
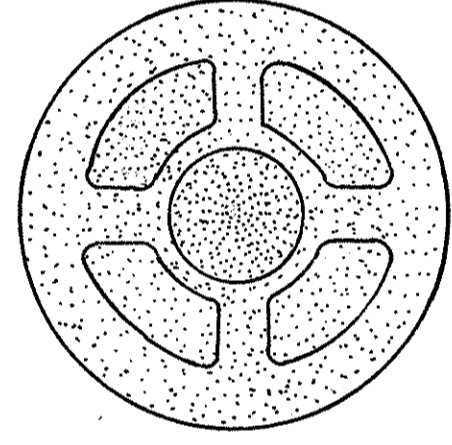
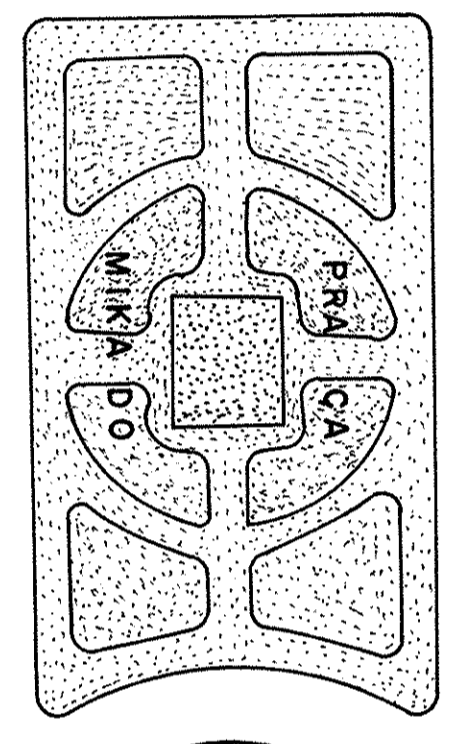
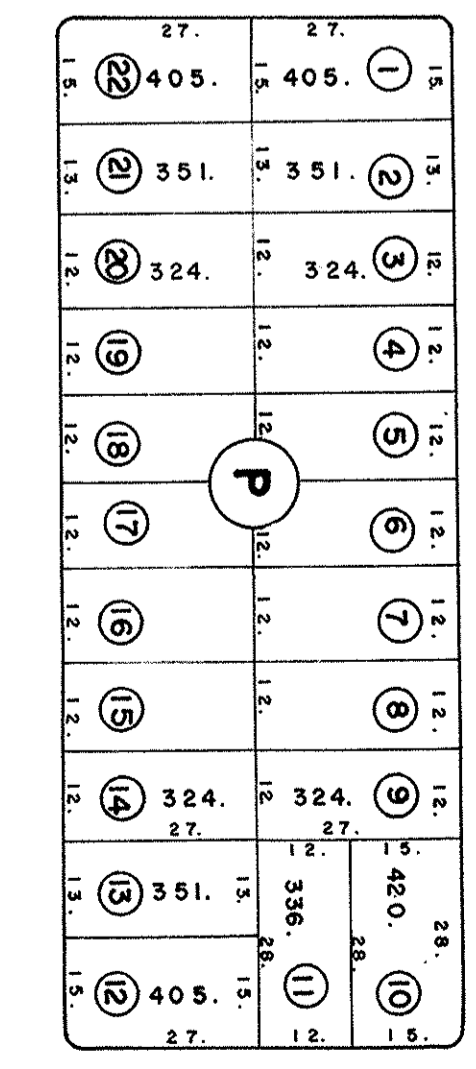
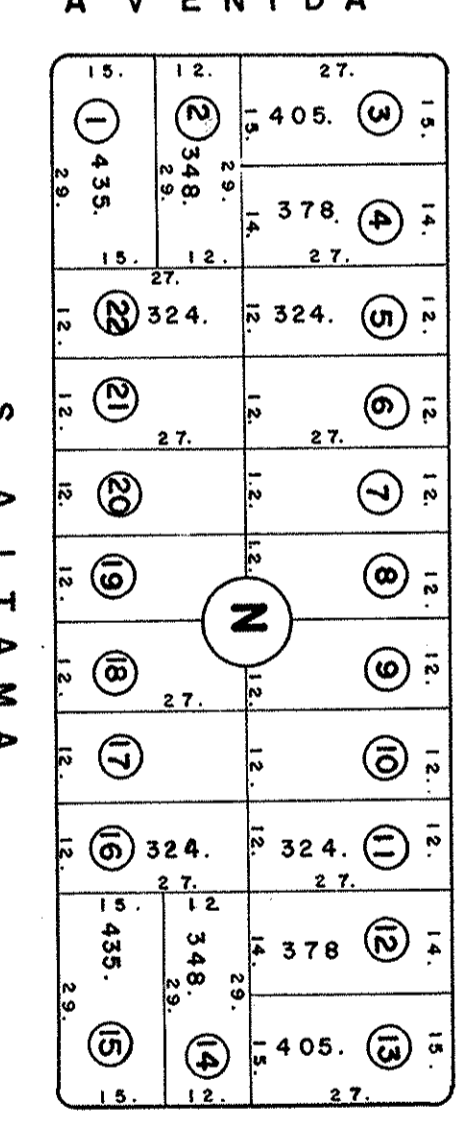
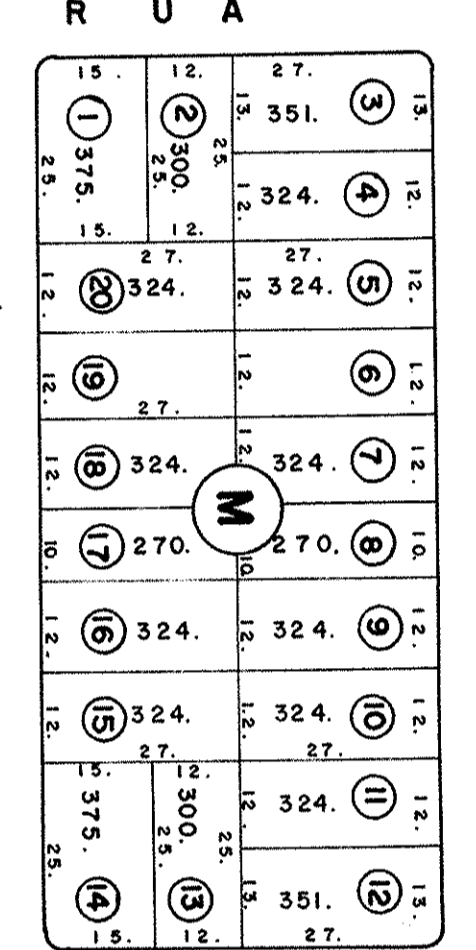
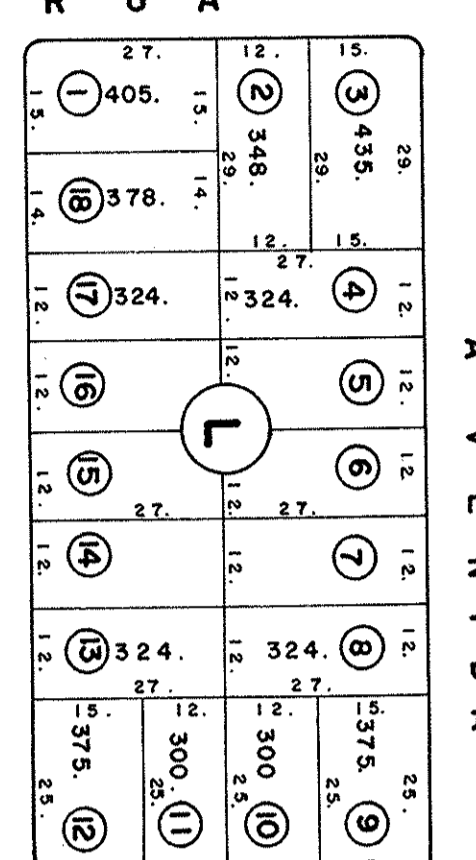
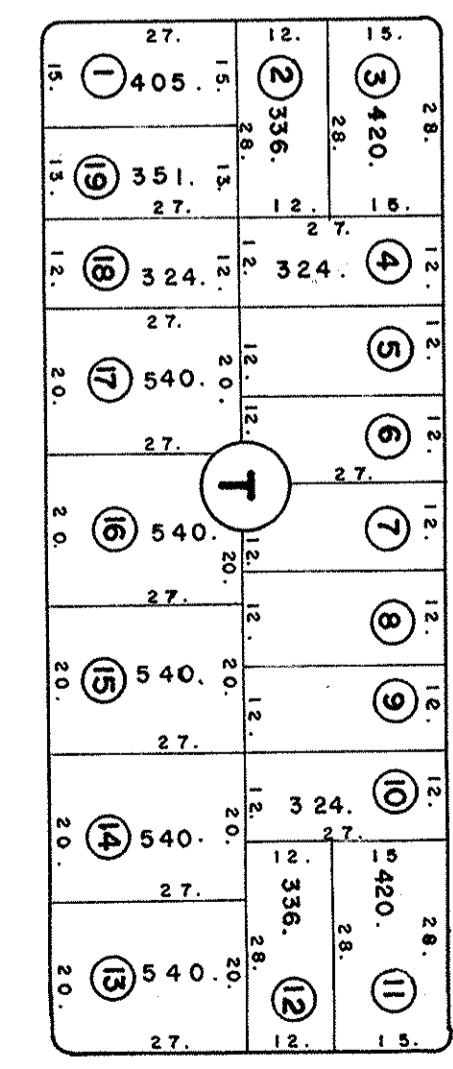
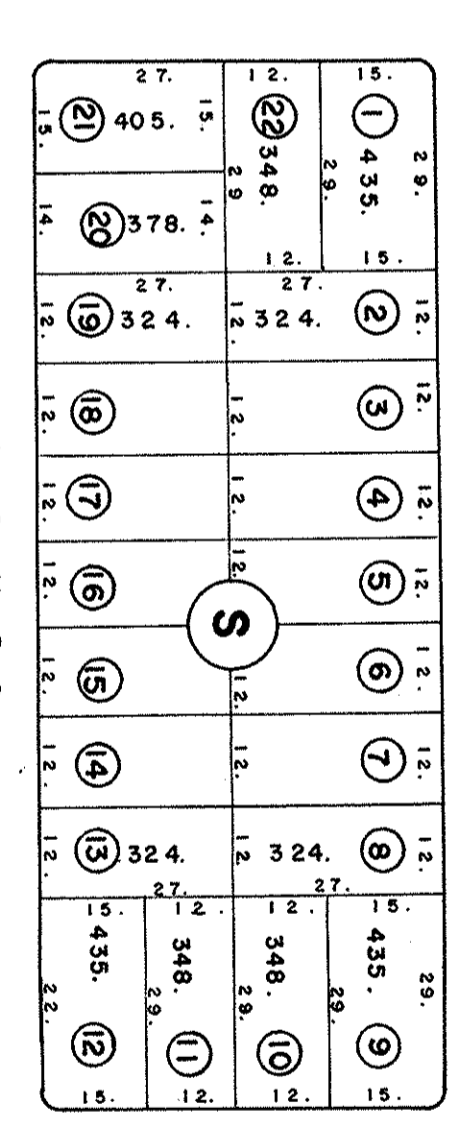
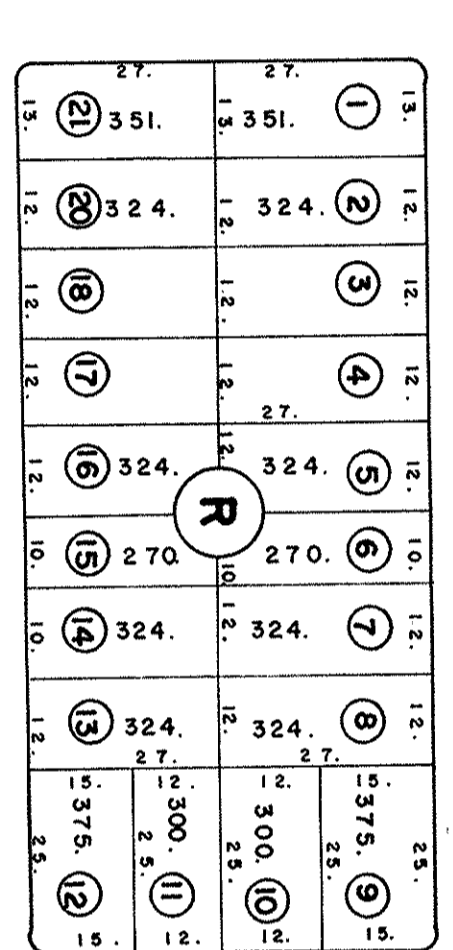
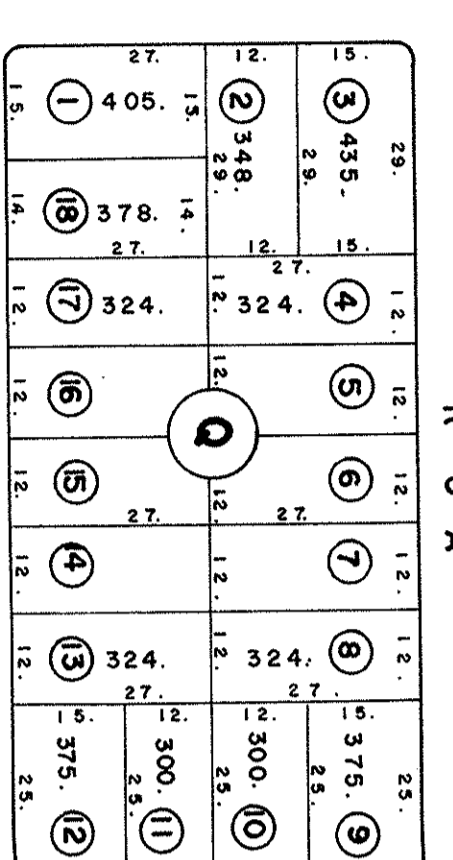
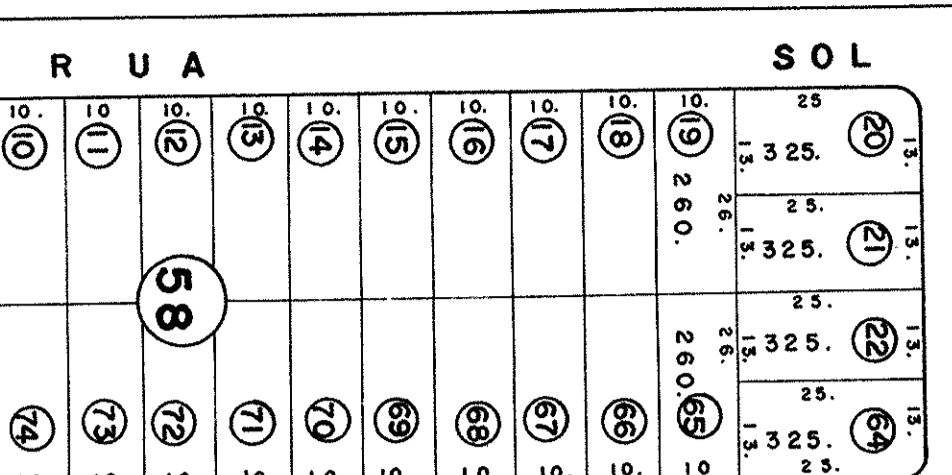
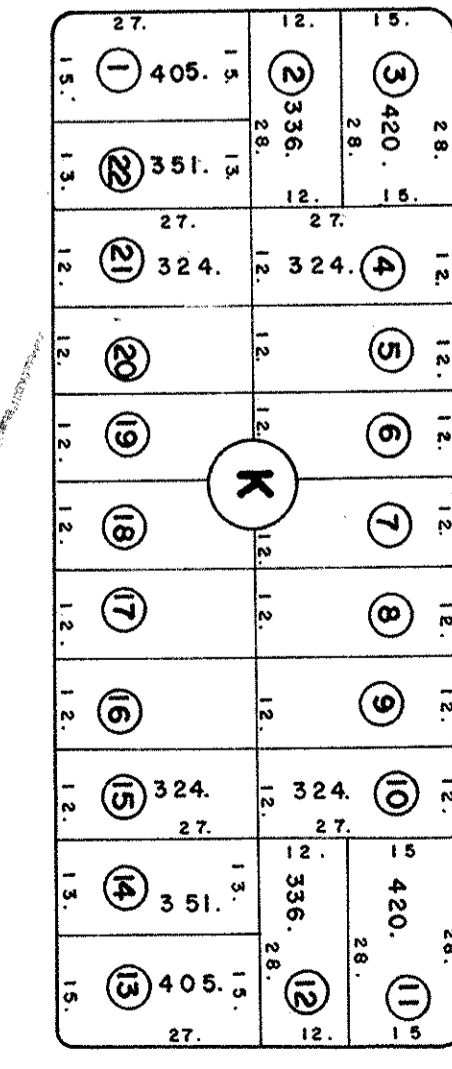
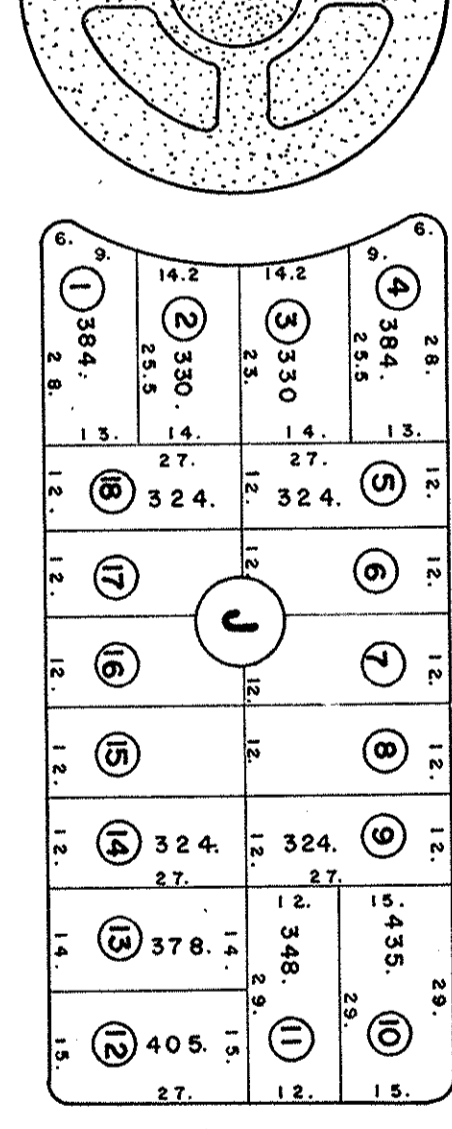
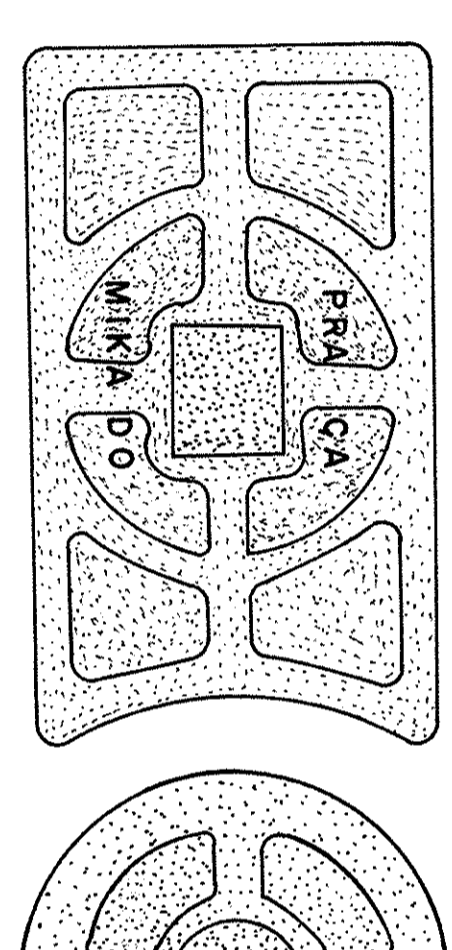
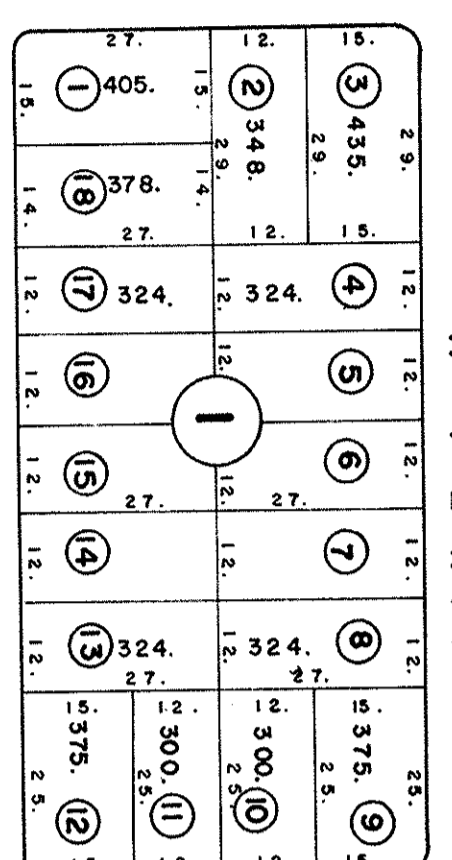
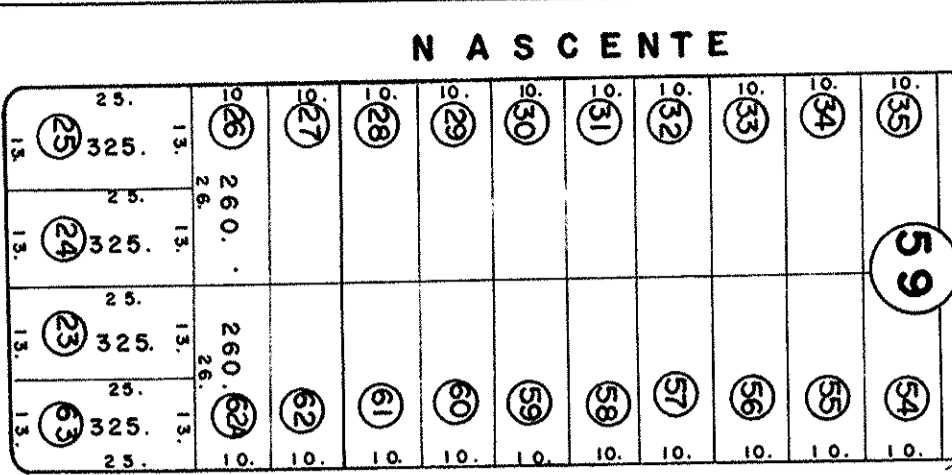
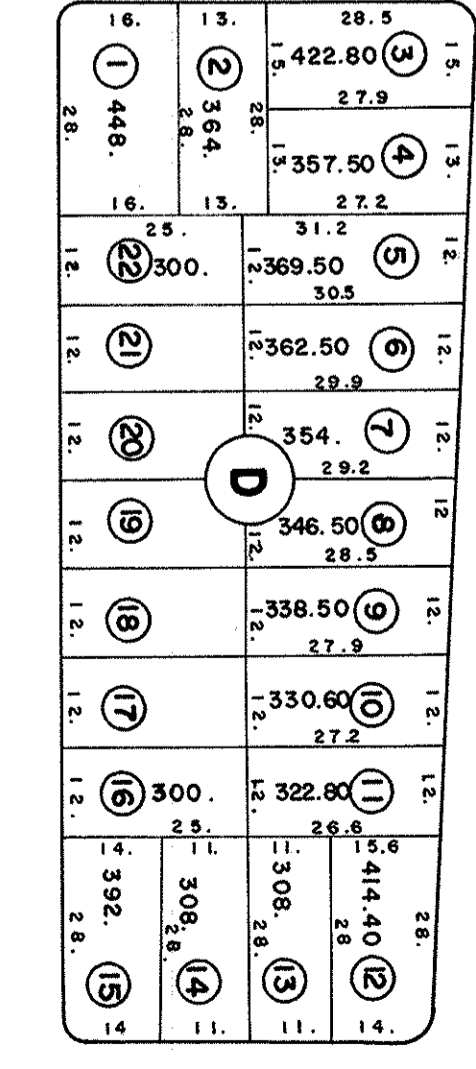
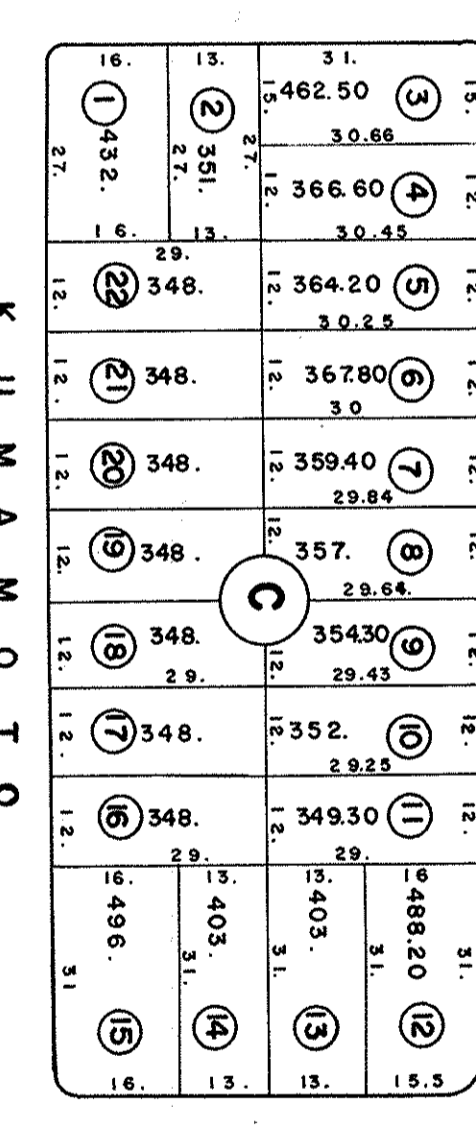
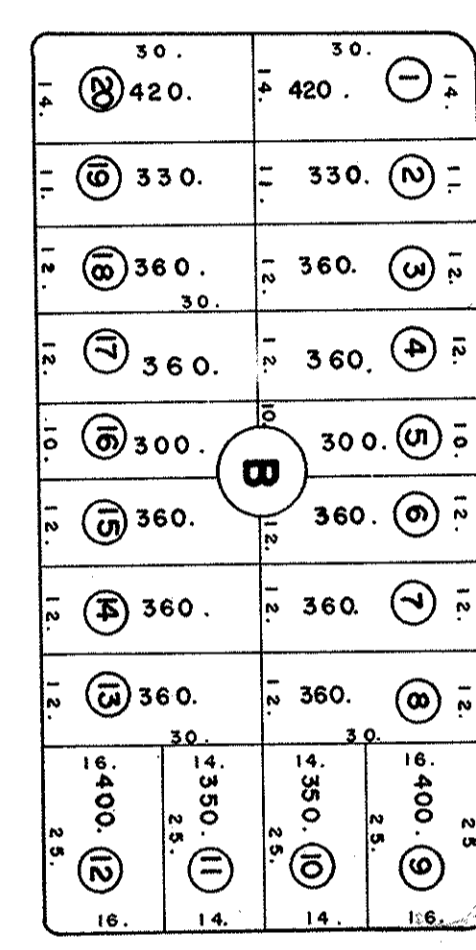
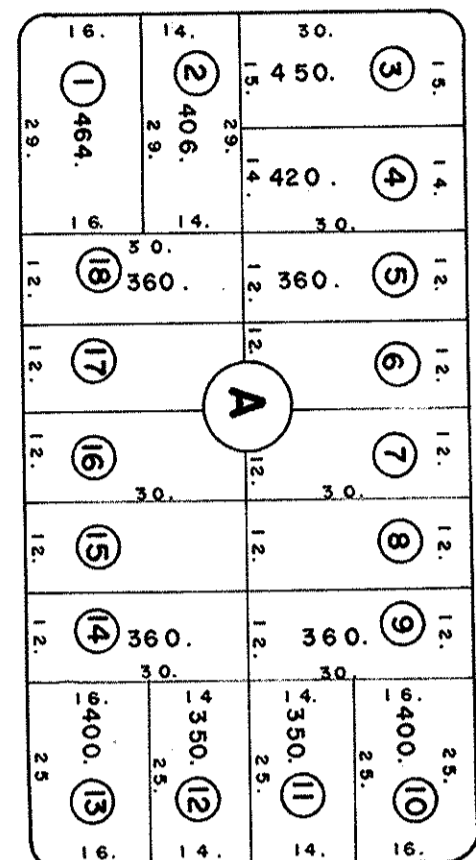
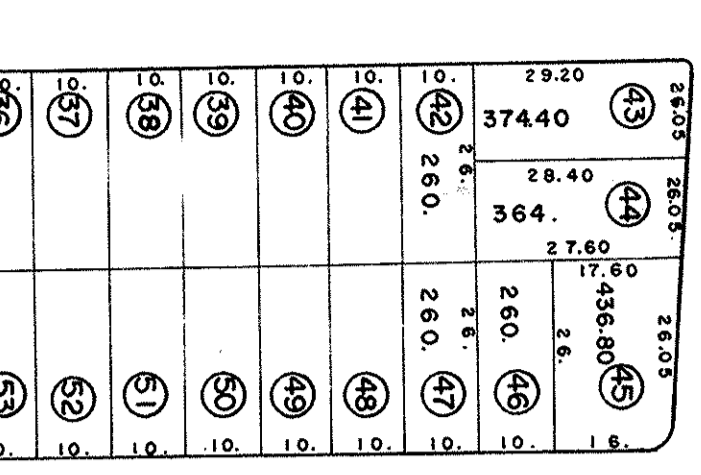
JARDIM ORIENTAL



RUA A. MAG. A. J.

TOTTONI

CIDADE



CHACARAS de TORATARO TAKITANI

SUPLENTE ALTERNATIVO

PREFEITURA MUNICIPAL DE SÃO JOSÉ DO RIO PRETO
SECRETARIA DE OBRAS, SERVIÇOS PÚBLICOS E MEIO AMBIENTE

JARDIM ORIENTE

PROC. 1268/59

DATA: 20-07-83

EDITAL Nº: 1/1000

EMPRESA: Wilson M. Nogueira - UTEC

PROJETO: JOSÉ W. TORATANI

081